

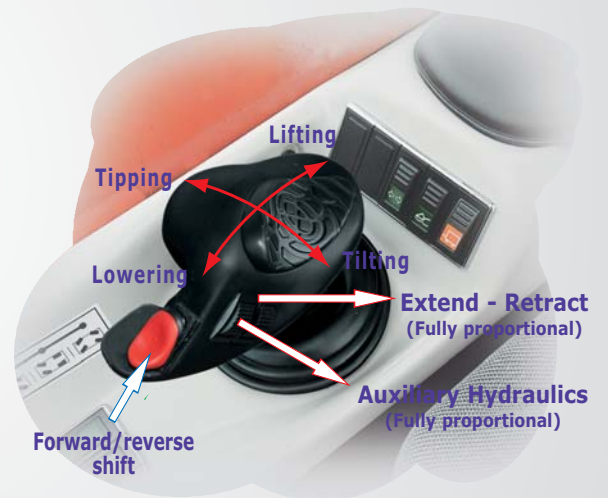
MANISCOPIC

MLT 735

120 LSU



- **Lift Capacity: 7,500 lb.**
- **Maximum Lift Height: 22 ft. 6 in.**
- **Maximum Forward Reach: 12 ft. 9 in.**
- **Perkins 123 HP Engine**
- **Torque Converter**
- **Three Steering Modes**
- **JSM Joystick - an all-in-one system**



MANITOU®

MLT 735 - 120 LSU



Lift Capacity:

Maximum (24 in. load center)7,500 lb.
 Capacity at maximum reach2,100 lb.
 Break out force on bucket teeth
 with tilting ram (ISO 8313)12,477 lbf.



Lift Height:

Maximum lift height22 ft. 6 in.
 Maximum forward reach12 ft. 9 in.
 Times: unladen / loaded (in sec)
 Lifting6.7/7.3
 Lowering4.8/4.6
 Boom extension7.1/7.3
 Boom retraction5.7/5.5



Tires:

.....460/70-24 XMCL



Brakes:

Inboard multidisc on front and rear axles



Engine:

TypePerkins Diesel 1104D-44 Turbo
 Power123 HP
 Displacement4 cyl. 268 cu.in.
 Maximum Torque320 ft.lb. at 1400 rpm
 InjectionDirect
 CoolingWater



Transmission:

TypeTorque Converter
 Electro-hydraulic reversing shift
 Speeds forward/reverse4/4
 Maximum travel speed20 mph



Hydraulics:

Pumpelectronically reg. variable displacement piston
 Flow3900 PSI - 40 gpm
 Flow divider with priority to steering and braking
 Monolever J.S.M (Joystick Switch and Move)



Capacities:

Hydraulic oil33 gal.
 Fuel tank31.5 gal.

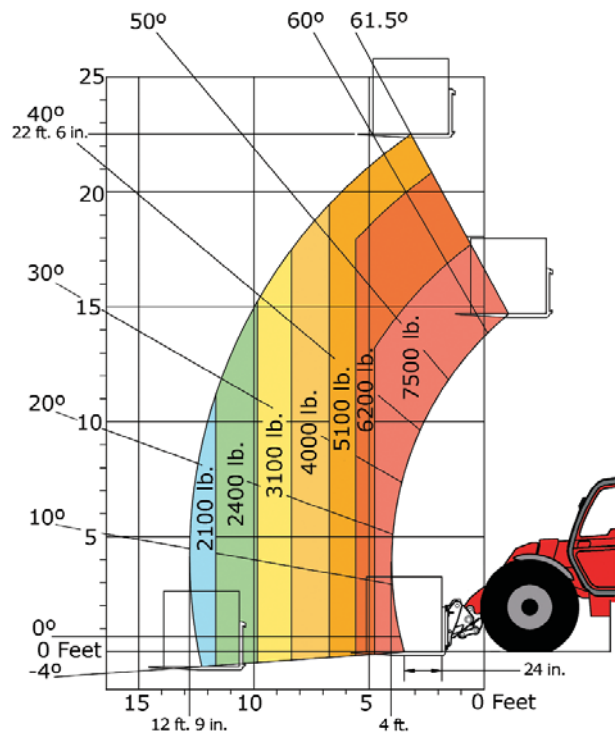


Specifications:

Weight (with forks)14,640 lb.
 Turning radius (outside wheels)12 ft. 8 in.
 Overall height8 ft. 4 in.
 Overall width7 ft. 7 in.
 Overall length (without forks)15 ft. 7 in.
 Ground clearance18 in.
 Carriage rotation147°
 Maximum drawbar pull18,428 lbf.

LOAD CAPACITY CHART

CALCULATED WITH OPTIONAL 48" CARRIAGE AND 48" FORKS
 (OPTIONAL ATTACHMENTS CAN DERATE THIS CHART)



Capacities shown in pounds/feet are the maximum recommended load limits at the indicated extensions of the boom. Capacity ratings are based on a 48" homogeneous cube and are in accordance with ANSI/ASME B56.6 stability standards. Capacity reductions must be made for extended load centers and when used with various other attachments, contact MANITOU NORTH AMERICA, INC.

DIMENSIONS:

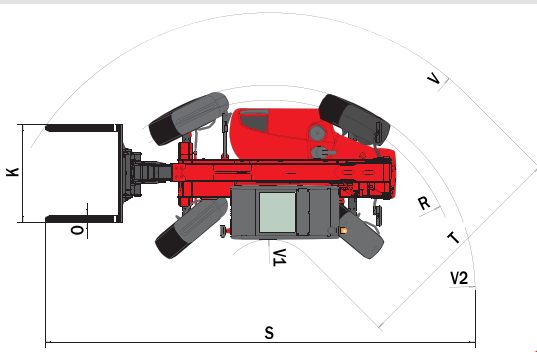
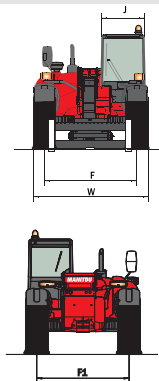
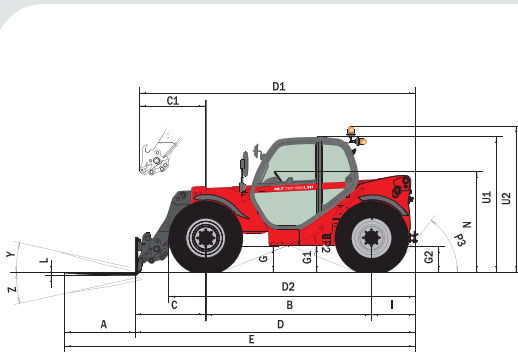
A.....48	K.....50
B.....110	L1.75
C.....47	O5
C ₁51	P ₂38°
D.....193	P ₃53°
D ₁187	R.....143
D ₂166	S.....301
E.....236	T138
F.....74	U ₁91
F ₁74	U ₂100
G.....18	V.....192
G ₁17	V ₁84
G ₂17	V ₂152
I.....31	W.....91
J.....34	Y12°
	Z134°

STANDARD EQUIPMENT:

- Enclosed Cab with Air Conditioning
- Hydraulic Power Steering
- Three Steering Modes
- Full Time 4 Wheel Drive
- Limited Slip Front Axle
- OuterPlanetary Hubs
- Hydraulic Oil Cooler
- Adjustable Seat
- Full Instrumentation
- Road Lights
- Horn
- Backup Alarm
- Inboard Wet Disc Brakes
- Parking Brake
- Quick Fit Tool System
- JSM Joystick
- Automatic Attachment Leveling
- Hydraulic Lock-out Valves
- Auxiliary Boom Hydraulics
- Left & Right Side Mirrors
- Front, Rear & Roof Windshield Wipers
- Front & Roof Sun Screen
- Front & Rear Work Lights
- Hood Screen Trash Shroud
- Neutral Start Switch
- Tow Pin

OPTIONAL EQUIPMENT:

- A wide variety of attachments and options are available to meet the customer's individual applications



Dealer:



MANITOU NORTH AMERICA, INC. - P.O. Box 21386 - Waco, TX 76702-1386
 Tel: 800-433-3304 - Fax: 254-799-4433 - www.us.manitou.com